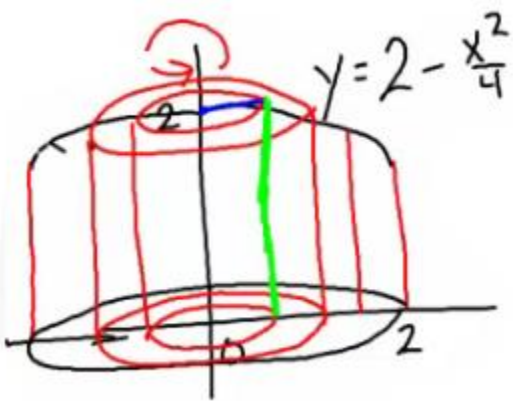


Shell Method

$V =$



$y = \sqrt{3}, \quad x = 3 - y^2$
1st Quadrant

$y = 2 - x^2$ $y = x^2$ $x = 0$ *About y-axis*

$y = \sqrt{x}$ $y = 0$ $y = 2 - x$
about x-axis

Try It: $x + 2y = 2$ *1st Quadrant* *about x-axis*