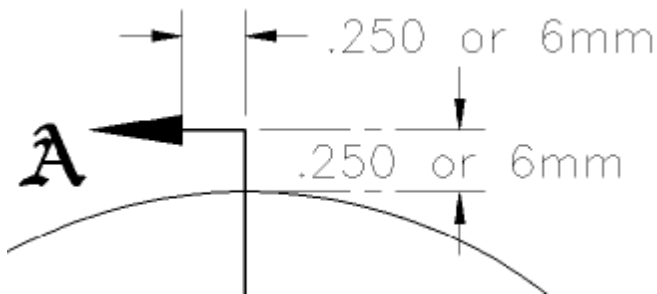


Section Rules and Tips for Drafting 101

Cutting Plane Lines: The cutting plane line and arrows must be on the **cutting_plane** layer. It will be a bold, thick phantom line, and it indicates where the section is cut through the object.

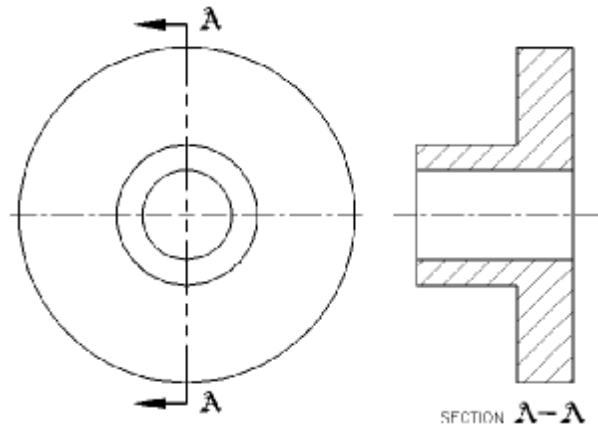


The arrowheads at the end of the cutting plane line can be created with the **Pline** command as follows (your input is bold):

```
Command: Pline
From point: (pick end of line)
... /Width/<End of line>: W
Start width: .12
End width <.12>: 0
<End of line>: @.375<180
```

Section lines (hatch lines) are to be **ANSI31** at a scale of **1.00** and a rotation angle of **0.0** unless otherwise specified. Section lines are created using the **Hatch** command, and should be located on the **Hatch** layer.

There are two pieces of text that accompany each section, the section letters near the arrowheads, and the section callout underneath the section view. The section letters are .25" (6mm) high, and usually a gothic style font. The section letters may be near the arrowhead, or the elbow. If you use the Mtext command, switch the font to **SWgothe**. A-A through Z-Z can be used, except for I, O and Q. The section callout is the word SECTION using .125 (3mm) **Romans** font, followed by A-A in .25" (6mm) **SWgothe** (or other similar font). All text should be on the **Text** layer. See the 'Simple section drawing' illustration at the top of the page for text placement.



A simple section drawing

The cutting plane line extends beyond the view .25" (6mm). A 90° bend is then drawn, with a line .25" (6mm) long in front of the arrowhead. The arrowhead is .375" (9mm) long and .125" (3mm) wide. (see illustrations left and below)

